



Lebanon National Operations Room

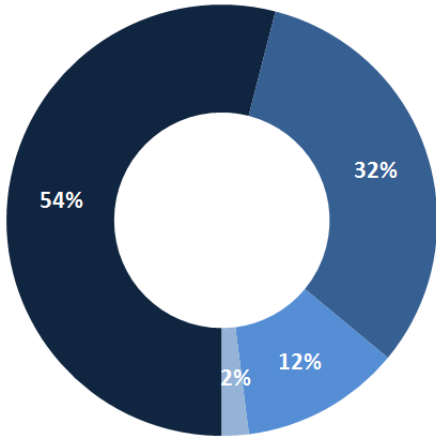
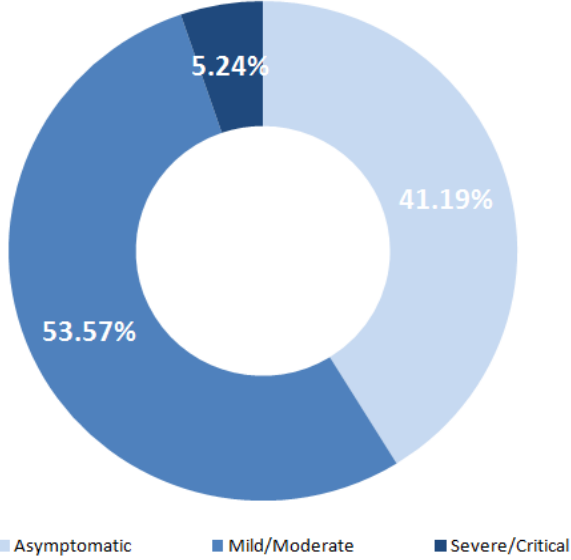
Daily Report on COVID-19

Friday, June 19, 2020

Report #93

Time published: 17:00

Status of Cases



Total registered cases since Feb. 21	1510
locals	1024
Lebanese expats	486
Recoveries	952
Deaths	32
Total registered cases in the past 24 hrs.	15
locals	10
Lebanese expats	5
Conducted PCR tests in labs since Feb. 21	112371
PCR tests conducted in the last 24 hrs. (in labs and in the airport)	1643
526 active cases	
487 in home isolation	
39 are currently hospitalized	
30 mild cases	
9 in ICU	

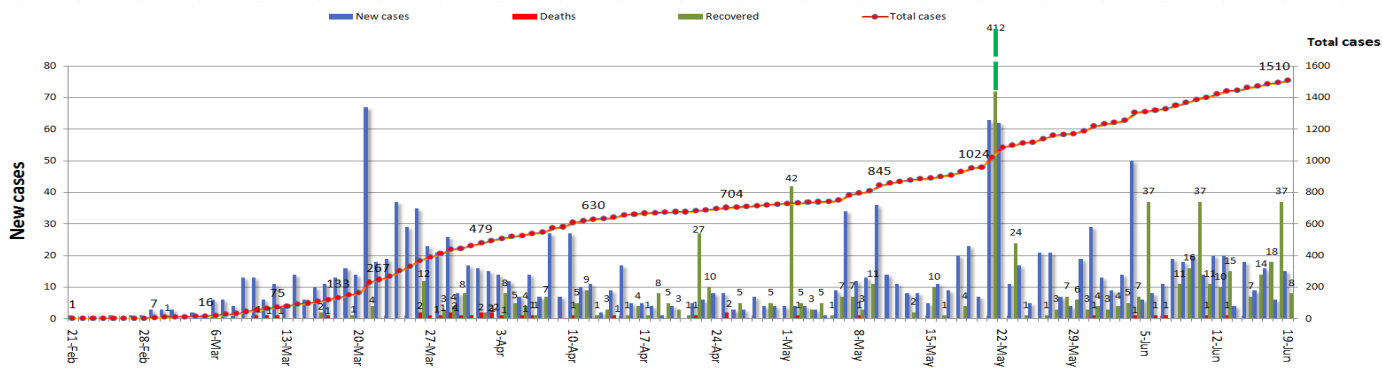
■ Contact with confirmed case ■ Travel related ■ Under investigation ■ Unidentified source

Comparison between Lebanon and other countries

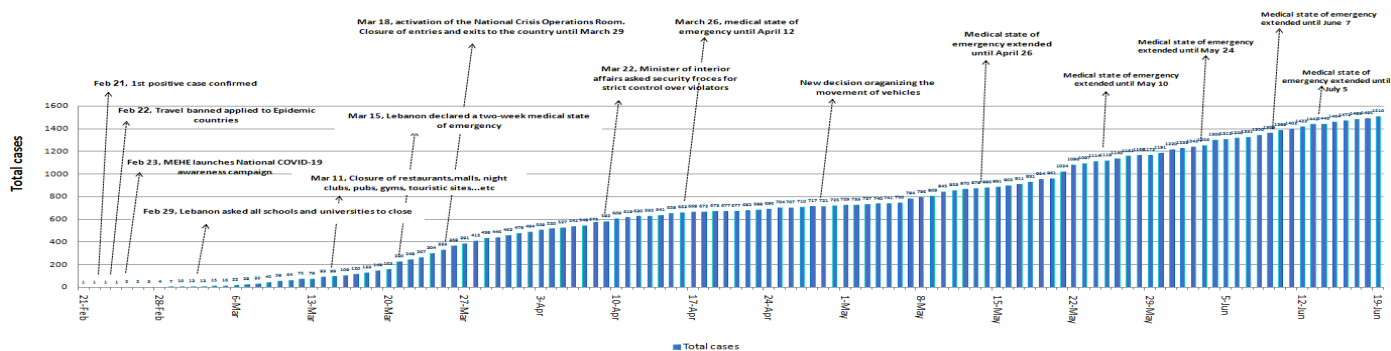
	Lebanon	Internationally
Total registered cases	1510	8,616,748
Total deaths	32	457,074
Percentage of deaths	2.11%	5.3%
Number of recoveries	952	4,562,448

*the above data was last updated at 4:45 pm

Cases per Day

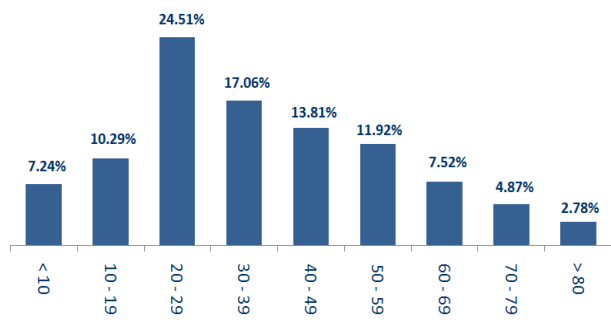


Chronology of decisions according to number of cases



Distribution of cases by age group

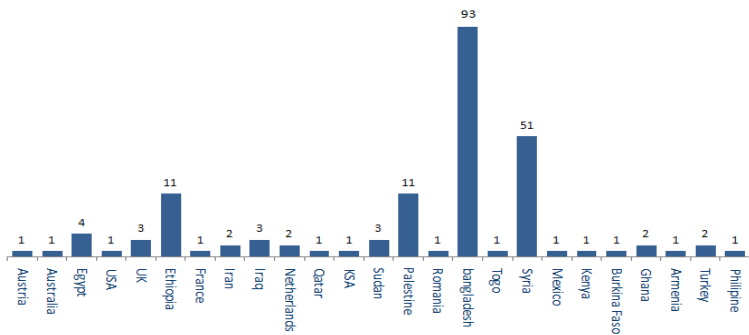
Distribution of cases by age group (%)



Distribution of cases by nationality

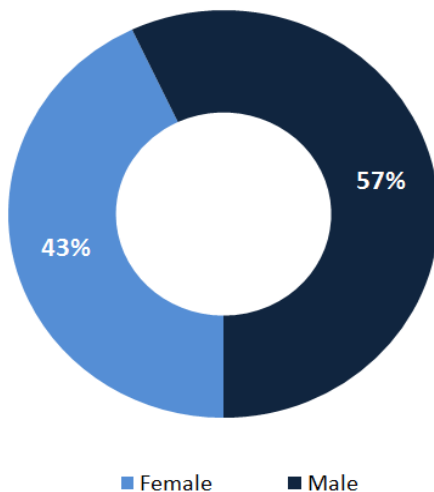
Distribution of cases by nationality

Lebanese: 1310 cases out of 1510 (87%)

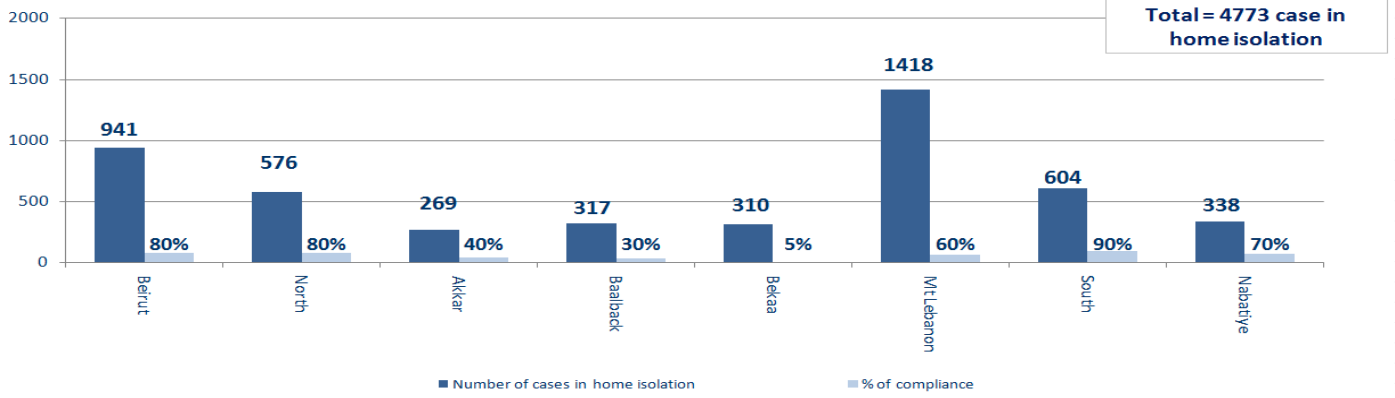


Distribution of cases by gender

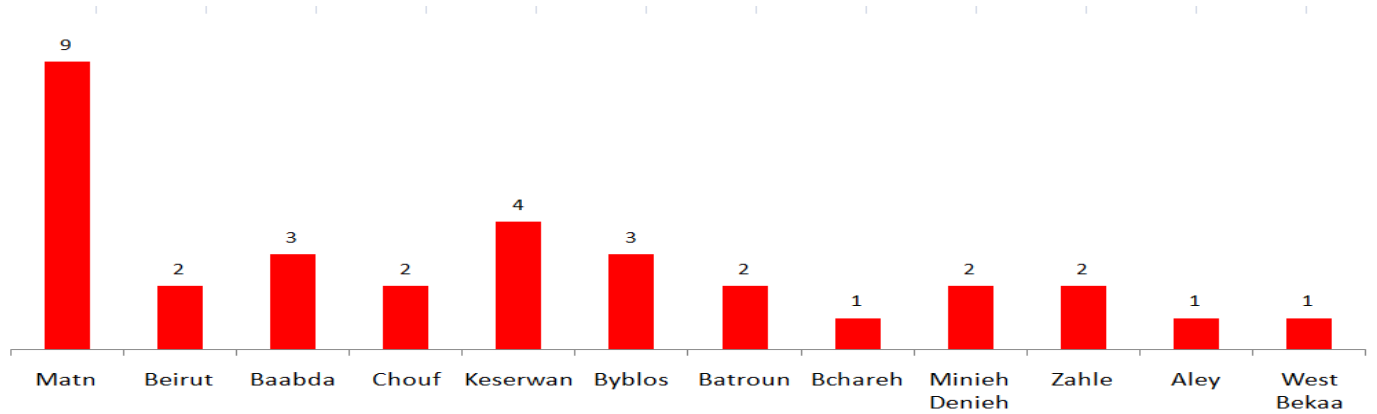
Distribution of cases by gender (%)



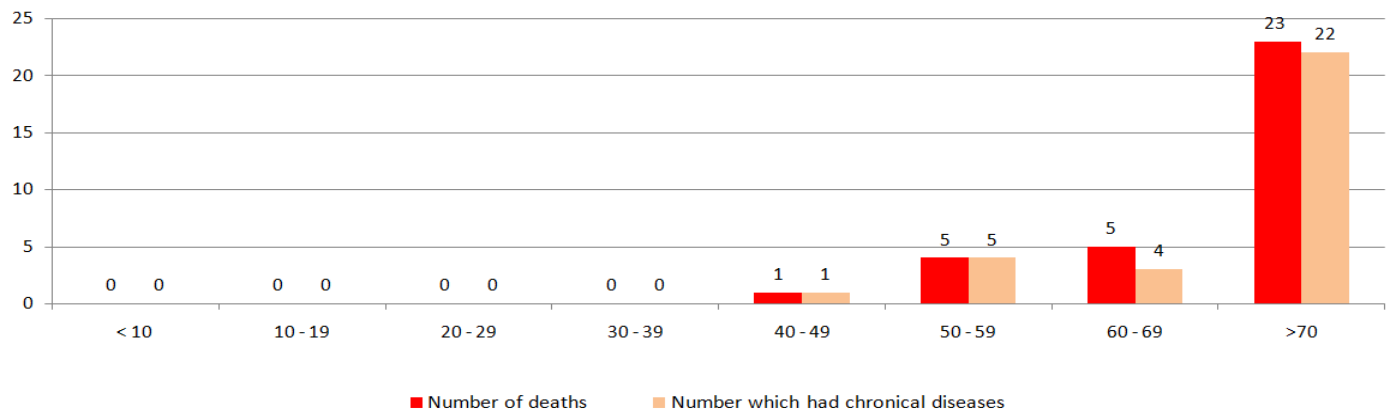
Number of individuals in home isolation and percentage of commitment to isolation



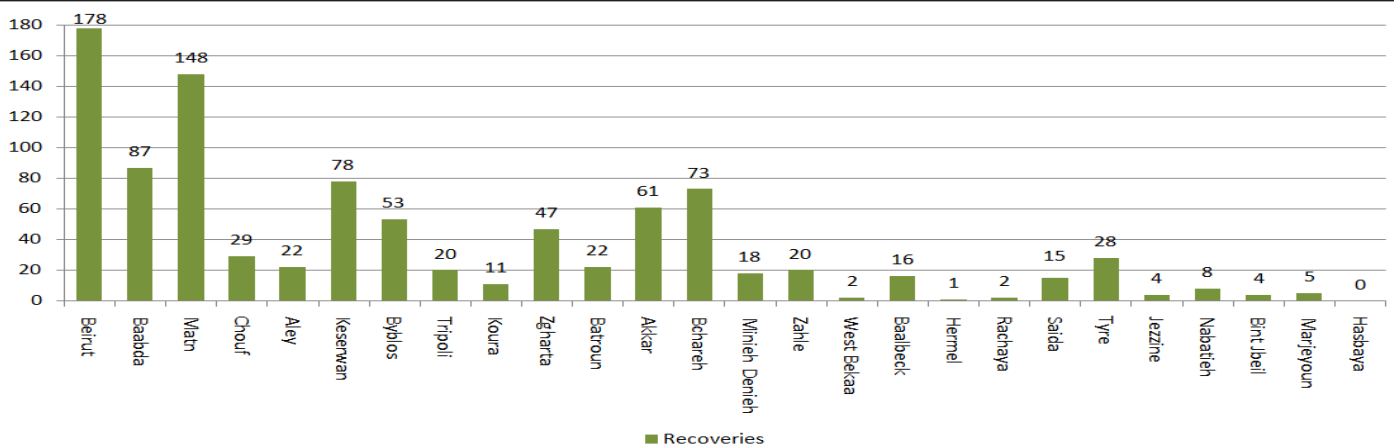
Distribution of deaths by governorates



Distribution of deaths by age

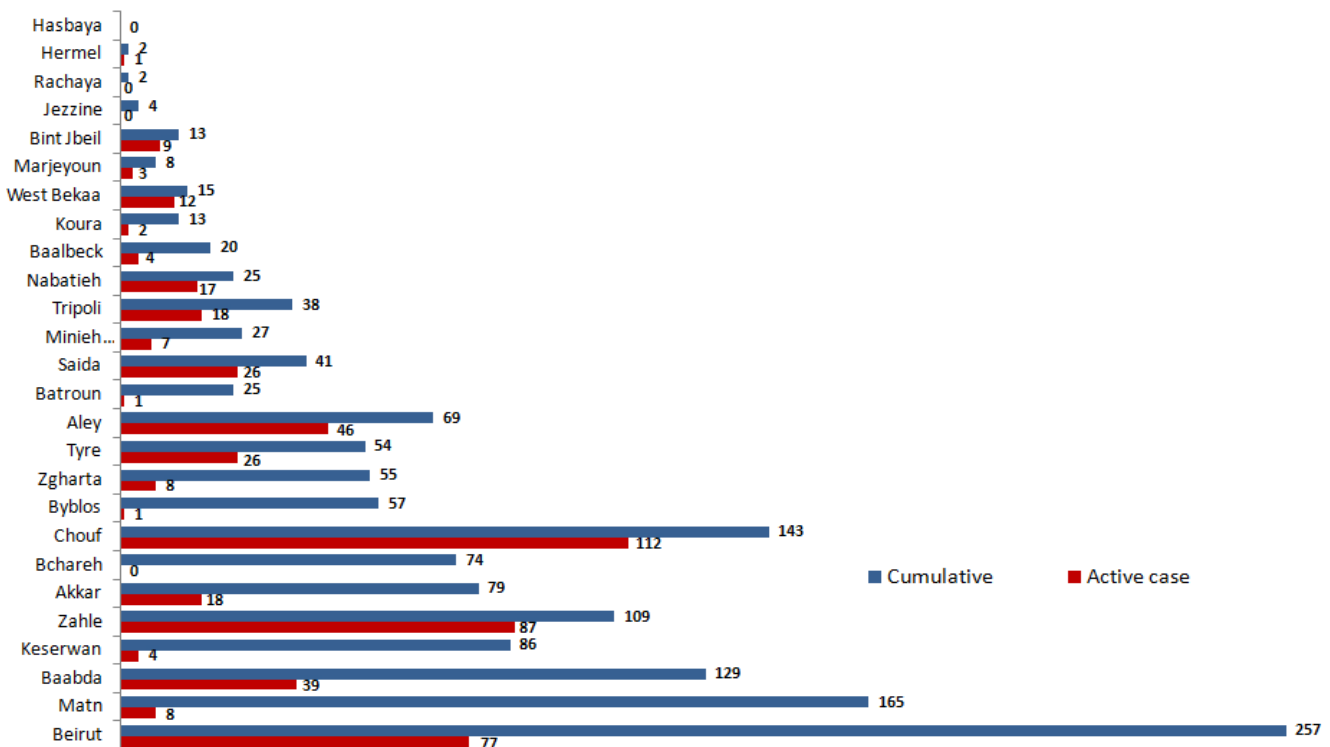
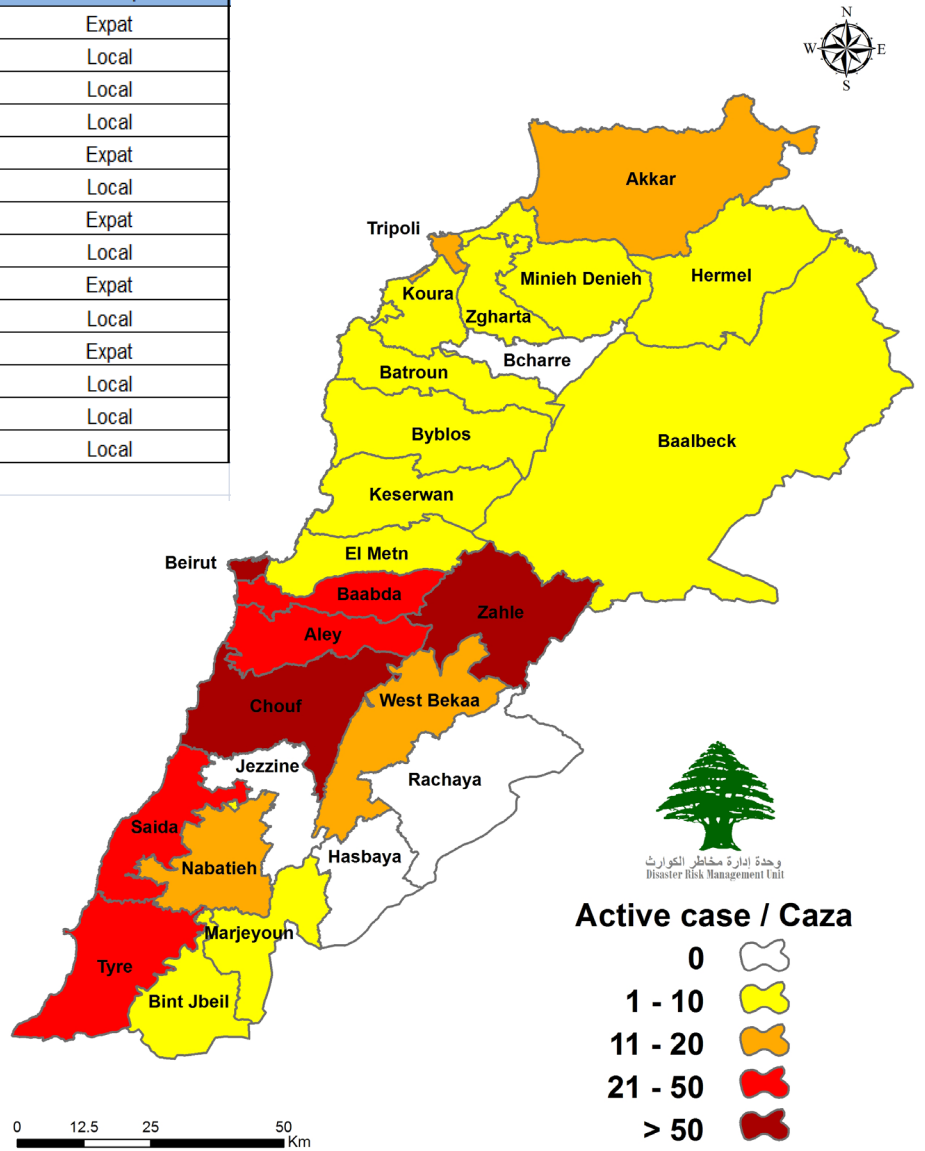


Distribution of recoveries by area



Number of Cases by Location

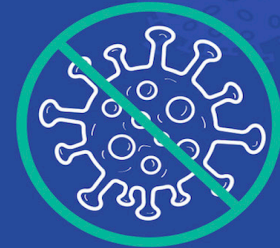
Municipality	Number of cases	Local/Expat
Baskinta (Matn)	1	Expat
Basta (Beirut)	1	Local
Bir Hassan (Baabda)	2	Local
Borj Hammoud (Matn)	1	Local
Borj Rahhal (Sour)	1	Expat
Deir Qanoun (Sour)	1	Local
Faytroun (Kesrwan)	1	Expat
Hay Sellom (Aleyh)	1	Local
Houmal (Aleyh)	1	Expat
Miyeh Ou Miyeh (Saida)	1	Local
El Fawar (Saida)	1	Expat
Wadi Nahleh (Tripoli)	1	Local
Tahouitat Ghadir (Baabda)	1	Local
El Mankoubin (Tripoli)	1	Local
Sum	15	



Examples of violations and lack of commitment

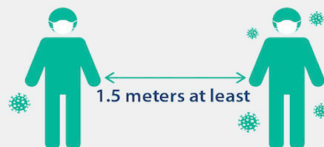
- Demonstration, and Roadblocks
- Violations of the car mobility, curfew, and the medical mask decisions
- Failure of commercial stores, supermarkets, and others to comply with the closing hours
- Overcrowding in restaurants and cafes and failure to comply with the permitted number of customers (50%)
- gatherings in front of banks, money transfer offices and ATM machines without maintaining a safe distance or putting masks
- Gathering of citizens in hiking areas without committing to preventive measures
- Non-compliance of citizens with preventive measures in food markets
- Gathering in cafes
- hookah
- gatherings on beaches and sidewalks without wearing masks.
- Opening of sports clubs and electronic and game stores
- social gatherings and celebrations
- percentage of commitment varies between 10% and 50%

**LET'S STAY COMMITTED SO IT IS
REMEMBERED BUT NOT
REPEATED...**



Physical Distancing

Keep a safe distance



- Wear face masks outside the house
- Avoid touching the face
- Cover mouth and nose with elbow when coughing or sneezing

Prevention

Hygiene



- Wash your hands for at least 20 seconds
- Sterilize your purchased products before use or storing at home

➤ Adhere to all circulars by the Ministry of Public Health

In case you get any of the symptoms, contact the Ministry of Public Health on their hotline: 01594459 or 1214

Ministry of Public Health

- The Ministry is visiting areas where the pandemic has spread to follow up on the implementation of isolation and is following up with Lebanese who have recently returned to Lebanon.
- The Ministry supervises all the conducted PCR tests for those who were in contact with positive cases in various government hospitals, at the expense of the Ministry in order to determine the epidemiological reality in Lebanon and take the necessary steps.
- Conducting and following up on conducted PCR tests for citizens in various Lebanese regions.

Lebanese Red Cross

23238 new 188	Number of PCR tests transferred to laboratories	10	Number of additional ambulance centers ready to respond	37	ambulance centers	2142 new 10	cases transferred to hospitals
166	Number of volunteers trained to transfer PCR tests	1,344	Number of trained paramedics	7450 new 118	total number of respondents	60813 new 95	number of those benefiting from awareness sessions
967 new 33	The number of university volunteers trained to follow up on prevention measures in companies and institutions	217	Number of university volunteers trained to conduct awareness sessions	550	total LRC volunteers for covid19	7184 new 118	number of trained managers for isolation centers
3277 new 2	Number of beneficiaries from educational electronic platforms COVID-19	35517 new 319	Number of distributed equipment **	1196105	total distributed posters, brochures, and flyers on covid19 prevention	325	number of prisons that have been disinfected

* Includes: COVID-19 awareness sessions; awareness about the measures to take when returning to work and advanced training for field workers.

** Includes: medical and sterilization equipment.

Security services (Internal Security Forces, General Security, State Security, Army, General Directorate of Civil Defense)

- The Army:
 - carried out patrols in different Lebanese regions to disperse gatherings
 - distributed food units (CIMIC) in different areas.
- General Security Forces followed up on the airport's set regulations for the return of Lebanese expatriates to their homeland and tracked potential cases in various Lebanese regions and ensured that they're adhering to the terms of home isolation. In addition, they conducted patrols in different regions and issued warnings to institutions violating the decision of the Council of Ministers. ISF issued a number of fines:

fines issued since March 8, 2020		fines issued in the past 24 hours	
13909	individuals	6	individuals
2377	medical masks since (2020/5/29)	89	medical masks
16286	total	95	total

- The General Directorate of Civil Defense prepared 427 personnel and 69 ambulances, to interfere, when necessary, and transport those infected with the emerging coronavirus. The Directorate also carried out sterilization missions in public and private areas that were excluded from the decision to close.
- State Security Forces followed up on cases in home isolations.

Ministry of Interior and Municipalities

- The Ministry issued circular No. 57 / 2020 on 14/6/2020 which amends the opening and closing hours of industrial and commercial establishments. All private institutions can

now open in their official working hours while applying precautionary measures. The decision restricts amusement parks and Public gardens, children's play centers, nightclubs, games centers, theaters, cinemas, and social halls from opening. The curfew decision remains intact from 12 am to 5 am.

- Implemented the extension of the general mobilization procedures according to the decision of the Council of Ministers. The general mobilization extension begins on 8/6/2020 and will remain active until 5/7/2020.

Ministry of Foreign Affairs

- The Ministry is coordinating with the National Committee for COVID-19, the General Directorate of Civil Aviation and Middle East Airlines, to implement the fourth stage of the return of expatriates from 6/11/2020 to 19/6/2020.
- Following up with foreign missions on the departure of their citizens from Lebanon.

Ministry of Public Works

Flights arriving	Arrives from	Lebanese citizens on board	Arrival time	
SKYLounge	geneva	4	20:45	
MEA	egypt	9	13:35	
MEA	damam	4	13:40	
MEA	egypt	10	11:00	
AIR FRANCE	france	90	14:30	
MEA	doha	150	16:00	
MEA	accra	240	23:00	
MEA	frankfurt	150	16:00	
MEA	kano	240	23:45	
MEA	freetown	150	02:00	
LAT	berlin	30	21:15	
total	11	1077		
Flights departing	departs to	individuals on board	departing time	
SAFADI	saudi arabia	1	15:00	
MEA	egypt	9	10:00	
MEA	croatia	7	10:00	
		3	17	
Cargo planes	arrives from	carrying	time	
DHL	Bahrain	goods	21:35	
EMIRATES	dubai	goods	10:30	
LAT	turkey	goods	17:00	
TOTAL			3	
Port	entered		left	
	Import	Direction	#	export
beirut	goods	limasol	1	
	goods	greece	1	
jounieh	fuel	italy	1	goods
				turkey
			3	1

Railways and joint transportation

Borders and Airport

-Transporting those arriving to Lebanon via Rafic Hariri International Airport or Syrian borders to the isolation centers in coordination with the Ministry of Public Health and security forces (25 buses)